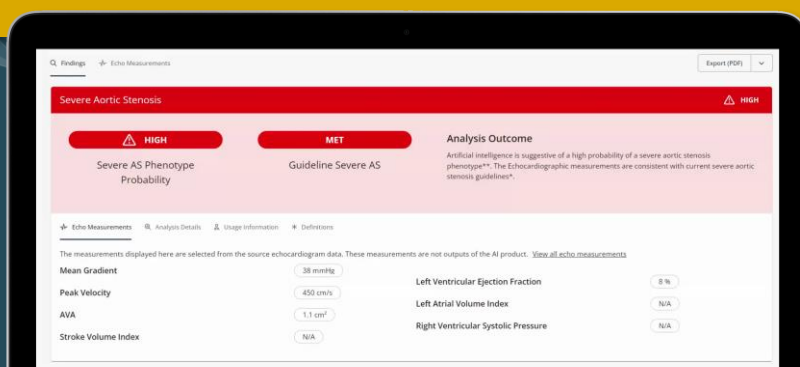




Grow your cardiovascular program through the timely identification of at-risk patients.

## EchoSolv AS™ helps find Severe Aortic Stenosis patients before it's too late.

Trained and validated on more than 1M patients, EchoSolv AS™ identifies at-risk Aortic Stenosis patients.



### DIAGNOSE WITH CONFIDENCE

- Increase certainty in challenging cases
- Eliminate unconscious bias to standardize care



#### ACCURATE

- Consistent assessment with zero variability
- Comprehensive hemodynamic evaluation in under 3 seconds



#### UNBIASED

- Eliminate unconscious bias and standardize diagnosis across age, race, and sex
- Increase certainty in challenging cases, including LFLG



#### COMPREHENSIVE

- AI trained on the largest global database of echocardiograms linked to mortality with more than 200 million echo endpoints



# CLINICAL VALIDATION

**Study Site:** Beth Israel Deaconess Medical Center

**Completed:** November 2022

**Study Size:** 31,141

**Key Findings:**

1. EchoSolv AS™ identified 100% of patients with guideline defined aortic stenosis, equal to 5% of study population.
2. EchoSolv AS™ identified an additional cohort, similar in size, at high risk of mortality.
3. 3/4 of the EchoSolv AS™ identified cases had not received treatment.

"EchoSolv worked extremely well to identify individuals with severe aortic stenosis, despite needing minimal data inputs. Using EchoSolv in clinical practice could make a huge difference in our ability to identify those individuals who need timely evaluation."

Prof. Jordan Strom.  
Harvard Medical School Principal Investigator

**Studies Sites:** St. Vincent's Hospital, Melbourne & Sydney

**Completed:** 2022 - 2023

**Studies Sizes:** 8,257 & 9,189

**Key Findings:**

1. EchoSolv AS™ identified 100% of patients with guideline defined aortic stenosis, equal to 4% of study population.
2. EchoSolv AS™ identified an additional cohort, 72% more patients, at high risk of mortality.
3. 55% of the cases of guideline-defined severe aortic stenosis cases did not have an active treatment plan.

"The EchoSolv platform is the first in the world to show improvement in severe AS identification compared with current clinical practice."

Prof. David Playford  
Chief Medical Advisor, Echo IQ

**Research:** International Cohort Study

**Published:** JASE, January 2023

**Study Size:** 248,646 (US and Australia)

**Key Finding:**

- The distribution of AS severity was similar in both the US and Australian cohorts.

**Conclusion:**

- Despite different healthcare systems similar patterns of mortality existed linked to increased Severe AS

These data support the need to develop and apply more pro-active surveillance strategies in this high risk population

"EchoSolv AS platform provides the solution to a current unmet surveillance need for aortic stenosis patients."

Prof. Geoff Strange, University of Notre Dame  
Co-Founder, Director, and PI of NEDA



## EASY INTEGRATION

- No disruption to existing workflows
- Risk alerts to support easy interpretation



## SECURITY

- HIPAA and SOCII compliant



## FLEXIBILITY

- Can be used retrospectively to review previous echos (QA approach)
- Can be used in real-time to provide timely analysis

The two-year survival rate for patients with Severe Aortic Stenosis who remain untreated is **50%**.<sup>1</sup> Let's change that today.

**Book a demo now to see EchoSolv AS™ for yourself.**

# Echo IQ

<sup>1</sup> Clark M, Arnold S, Duhay F, Thompson A, et al.

**Direct contact:** Don Fowler | President, Echo IQ USA

**Phone:** 714-290-9568

**Email:** don.fowler@echoiq.ai